

SRP-275



The **SRP-275** is **2nd generation Impact printer** which just started with a new name BIXOLON. This printer has more functions such as two-color printing and versatile paper roll sizes and boasts about fast speed and less printing noise. It's really successful series from SRP-270.

- Drop and Print paper loading
- Faster print speed 5.1LPS.
- Internal power supply
- Built in buzzer alarm
- Flexible paper widths. (57mm, 69mm, 76mm)
- 2 color black and red printing
- Easy update logos and firmware using Store maker.

- POS system
- Receipts and coupons
- Kitchen printer

Versatile system features for all retail solutions!!!

• *Impact printing for the Future*

The SRP-275 is ideal for both POS receipt printing and remote printing for food and drink preparation orders in hospitality applications.

• *Faster and Quieter*

Logic seeking, bi-directional print technology allows higher speed than previous models. The SRP-275 is quieter too, improved engineering makes impact printing almost unnoticeable in most environments.

• *Operational Reliability*

There is nothing more frustrating than running out of paper during a print operation. The SRP-275 benefits from a paper near in plenty of time to replace the roll. Other sensors include; paper end and printer cover open.

• *Versatile Paper Roll Sizes*

The SRP-275 can easily be made to take different width paper roll sizes saving paper costs. The full width 76mm roll is ideal for POS receipts, especially when used to provide promotional coupons and vouchers. For other uses like back of house information printing the 69mm or 57mm roll may be more than adequate.

• *Easy System Integration*

With fast moving technology in IT solution it is important to have simple integration of peripheral devices. The SRP-275 is no exception, drivers are available for Windows 95/98/ME/NT4.0/XP and OPOS.

• *Drop In and Print Paper Loading*

Lift the lid, drop in the roll, close the lid and print. Nothing could be easier. No more feeding rolls through slots or rollers. No more embarrassing paper jams in front of customers.

• *Connectivity, No Problem*

The SRP-275 has versatile, interchangeable interfaces. Providing Serial, Parallel, USB and Ethernet options. If you want to connect to low cost cash registers or the most sophisticated EPOS system or hospitality management system just choose the interface that your system needs.

**S.A. CASH
REGISTERS**



955 PORT ROAD
CHELTHENHAM 5014

8347 3777

Versatile system features for all hospitality solutions!!!

The **SRP-275** is ideal for both POS receipt printing and remote hospitality printing. It is a **robust, high performance** impact receipt printer which is exceptionally **easy to use**. Featuring drop-in paper load, selectable auto-cutter and clamshell covers for easy access and maintenance, the **SRP-275** is very reliable and prints on plain paper in three widths.

• Customizing your Receipt

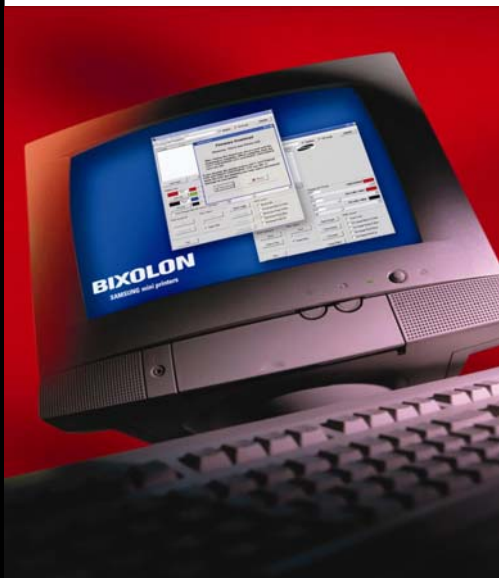
By utilizing the statistic memory of the SRP-275 you can provide unique identity to your receipts. Add value to the customer receipt by including a voucher or money off coupon and get your customer to come back to your store, bar or restaurant.

• Print Alarm Buzzer

Because of the resilience of the SRP-270 printers it is ideally suited to usage in food and beverage preparation areas. In fact, anywhere that information needs to be passed to a remote location. These remote locations are quite often noisy places so the SRP-275 is fitted with a print alarm buzzer (program option) as standard equipment.

• Software utilities

The SRP-275 has the advantage of flash ROM based on board software. This means that any new features can be simply downloaded to the printer from a PC using the firmware download utility. Also available is the Store Maker logo download utility allowing updates of logos and coupons.



SPECIFICATION FOR THE SRP-275 IMPACT PRINTER

PRINT	PRINT METHOD	9 pin serial impact dot matrix
	PRINT DIRECTION	Bi-directional, Logic seeking, Friction feed
	PRINT SPEED	5.1 lines per second at 40 column
	PAPER SUPPLY METHOD	Drop in and print
	DOT PITCH	0.352mm (1/72")
	DOT WIRE DIAMETER	0.3 mm (0.01")
	CHARACTERS PER LINE	Font A : 33, Font B:40
	PRINTING WIDTH	63.34 mm (2.49")
	LINE SPACING	4.233mm (1/6 inch), Can be set by a command
	CHARACTER FONT	Font A : 7 X 9 / Font B : 9 X 9
	CHARACTER SETS	Alphanumeric characters : 95, international characters : 48, Extended graphics : 128X 20 pages
	MEMORY	Print buffer : 8 Kbytes NV image : 256 Kbytes
	CONTROL CODE EMULATION SOFTWARE	ESC/POS, Star, Citizen. Utilities : Firmware/NV image download, Virtual memory switch manager
DRIVERS	Windows 95/98/ME/2000/NT4.0/XP, OPOS	
SENSORS	Paper end, paper near end, wall mounting paper near end, cover open sensor	
BUZZER	Buzzer alarm	
PAPER ROLL	WIDTH	76, 69, 57mm ± 0.5 mm, 2.99" , 2.74", 2.26" ± (0.22")
	THICKNESS	0.06 – 0.09 mm (0.002 – 0.003")
	DIAMETER	83mm (3.27") – Core Max.19mm
RIBBON	TYPE	SRP-275 B/R (ERC-38 cassette, Black/Red)
RELIABILITY	MECHANISM	18 million lines
	AUTO CUTTER	1 million cuts
CONNECTIVITY	INTERFACE	Serial, Parallel, USB, Ethernet, Bluetooth
	DKD FUNCTION	2 ports
	EMC/SAFETY STANDARD	CE, FCC, UL, TUV, GS
POWER	SUPPLY	AC100V~240V±10%, DC24V Internal/External installation
OPTIONS	PAPER CUTTER	SRP-275A (tear bar), SRP-275 (auto cutter)
	COLOR	Ivory, Dark Grey
	WALL MOUNT	Wall mount bracket